

## RANGE 7

### SOP

#### RANGE DESCRIPTION

Range 7 is an active; direct and indirect live-fire range located at Grid **79206640**. It is accessible from route 610 and MCB 3. There are 15 firing points on Range 7. Max Range is 1947m.

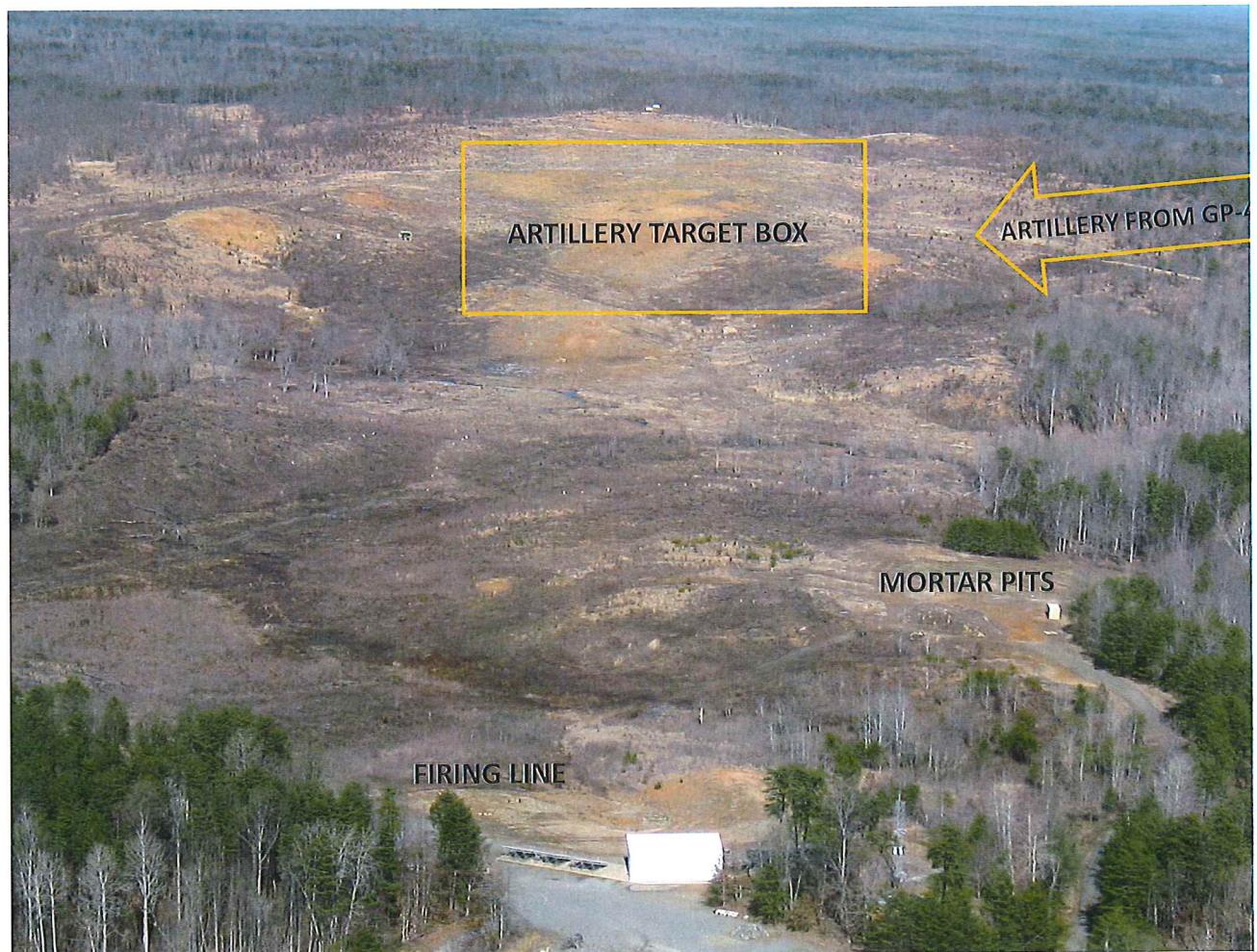
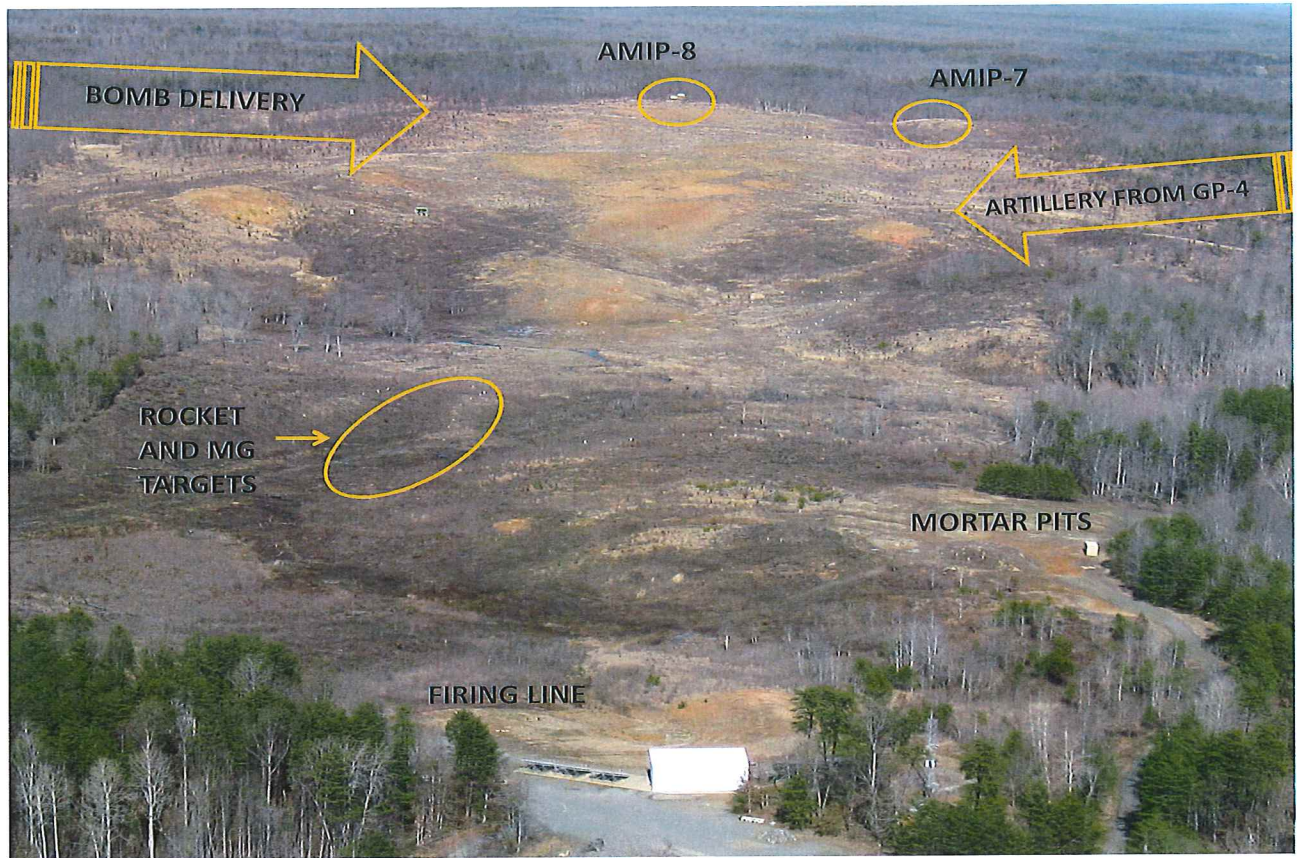
Primary Use: Primary Use: For weapons instruction and field firing evolutions.

Alternate Uses: Call for fire instruction in close fire support; close air support training.



RANGE 7









#### WEAPONS ACCOMMODATED

- Pistol
- Shotguns
- Service rifles
- All Machine Guns
- Automatic rifles
- Handheld 40mm grenade launchers,
- SMAW
- MK-19
- AT-4
- M72 LAW
- All Special Application and Sniper rifles
- Grenades (illum and practice)
- 25mm Chain gun
- 30mm Cannon
- 60mm Mortars
- 81mm Mortars
- Approved R&D Weapons
- Approved Foreign Weapons
- Aerial-Fired Rockets
- Aerial Machine Guns
- Aerial-Delivered Bomb (MK-76/MK-82)
- 155mm Artillery (Fired from GP-4).
- TOW (INERT)

## AMMUNITION AUTHORIZED

- Pistol (All)
- 5.56mm (All)
- 7.62mm (All)
- .50CAL (all)
- .300 Magnum
- .338
- M203 (All)
- Grenade Illum & practice
- Shotgun (All)
- 21mm LAAW trainer
- TOW (INERT)
- AT-4, 9mm, HE, Practice
- SMAW (All)
- MK-19 (All)
- 25mm TPT/TP (Only)
- 20mm HEI
- 2.75 inch Rockets HE, Inert
- 25mm TPT
- 60mm (All)
- 81mm (All)
- 30mm TPT (With approval)
- 66mm LAW
- 155mm Artillery
- Aerial-delivered bombs MK76, MK82

## TARGETS:

EODT	18
Steel Silhouette	Approx 90
Aerial CAS	2 (AMIP's 7 and 8)

PRIMARY DIRECTION OF FIRE: Northeast

## SPECIAL INSTRUCTIONS/COMMENTS:

1. Only weapons, ammunition and ordnance listed in this document will be used on this range.
2. OIC and RSO must be present while live fire is in progress.
3. All brass, trash, targetry and materials will be removed completely at the end of training by the using unit. This includes any materials used to place targets on.
4. Ensure range flags are posted, ear protection is worn (eye protection for steel), safety brief is given, Range Control contacted and all fires are directed between the left and right lateral limits markers (black and white striped).
5. All training, including Close Air Support training will be in accordance with the Range Regulations and Range SOP requirements.

6. This range contains a high-hazard/dudged impact area. Downrange movement is not authorized without EOD support.

7. HERO sensitive munitions are commonly used on this range. It is the ROIC/RSO responsibility to understand all capabilities and limitations of their munitions. Ensure all necessary HERO precautions are taken.

8. There is no bivouac or privately owned vehicle (POV) parking allowed behind bleachers on the range. This area is designated as a MEDEVAC site.

9. Mortar Illum can be fired from the firing line next to the bleachers. All other types of mortar ammunition must be fired from the mortar pits or from the far left end of the firing line only.

10. Targets closer than 310 meters will not be engaged with MK-19 HE or HEDP. These are the closest two targets in the bottom of the ravine in front of the left side of the range. These targets are primarily used for 40mm handheld grenade launchers and rockets.

11. The individual observing artillery impacts on Range 7 during combined arms/CAS exercises can be the rank of Sergeant, but cannot be the senior man on Range 7 (active deviation on file). There must be an OIC/RSO for the range already assigned. If there are no combined arms, then rank requirements will be IAW MCO 3570.1C.

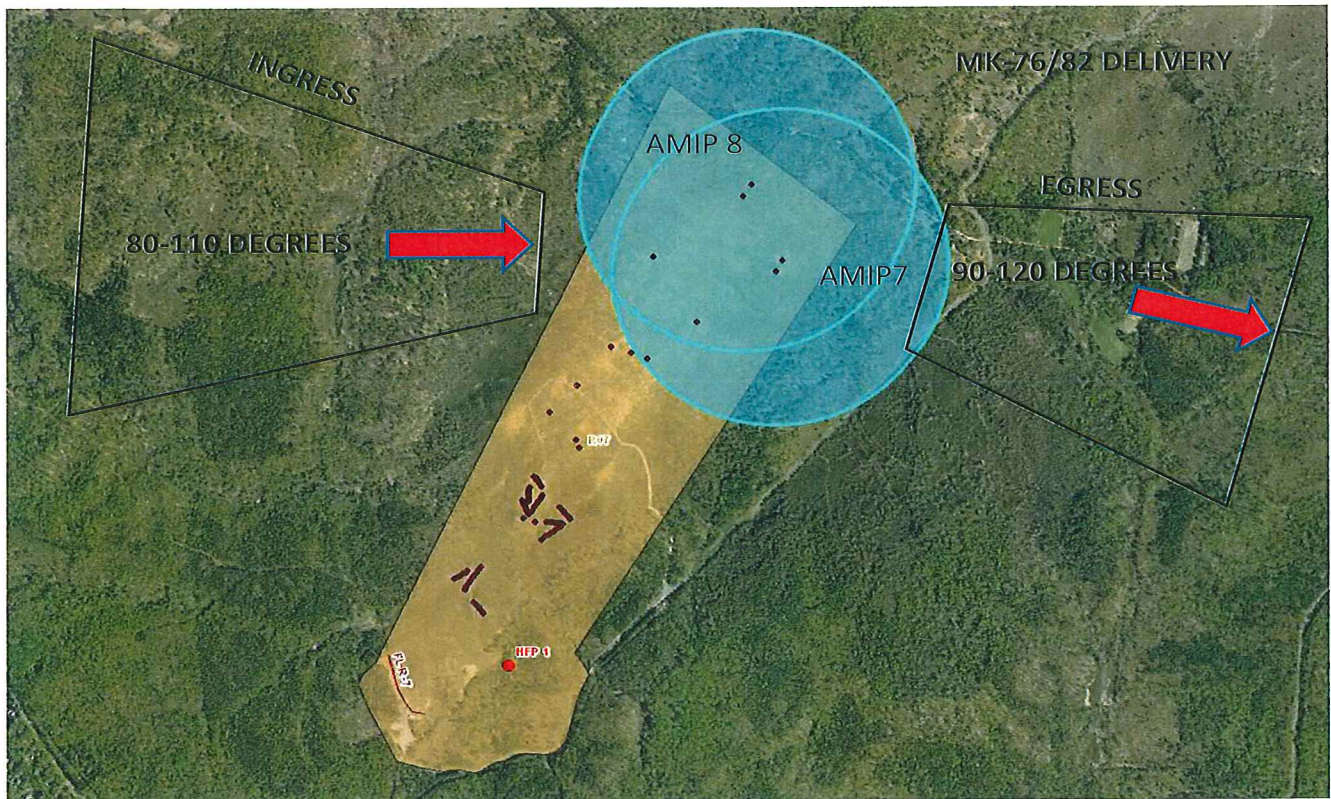
12. Class 3B and Class 4 LASERS will not be fired at any targets other than the designated ones in this certification and the Range SOP.

13. Standard fixed-wing inbound heading for AMIP-7 and AMIP-8 is 80-110 degrees magnetic. **Air-delivered bombs (MK Series) are restricted to AMIP 7 and 8 only.**

AMIP 7: 18STH8020967917  
18STH8018367885

AMIP 8: 18STH8011668171  
18STH8008368130





14. Egress heading for fixed-wing after delivery is 90-120 degrees magnetic. Aircraft will not fly north of the 69 Northing (Northernmost finger of Lunga Reservoir).

15. Forward Air Controllers will coordinate with pilots to ensure no ordnance is released or fired while the aircraft is outside the Installation boundaries.

16. Aircraft commanders will ensure that while outside the Installation boundaries, weapons systems are safed and always at least one movement/safety position away from being armed.

17. Range 7 impact area is also the location of the EOD Operations area. MCB EOD, as well as other local military EOD units are authorized (when approved by Range Control) to place, mark and detonate UXO found on base or other Installations or NCR sites providing the safety arcs fit within the Installation impact area and its assigned restricted airspace.

18. There is no downrange movement on Range 15 and 15A while firing TOW2B INERT or 2.75" FFAR MK66 MOD 0 from Range 7.

19. Range 8A cannot be occupied while firing TOW2B INERT from Range 7.

20. Far right mortar position on R-7 cannot be occupied when GP-4 is hot

21. 60mm and 81mm Mortars can be fired into Range 7 impact area from Range 8, Range 8A and Range 10. 120mm Mortars (cleared for overhead fire) can be fired into Range 7 impact area from GP-31.

22. Far right mortar position on R-7 cannot be occupied when GP-4 is hot.

23. Units that do not occupy their range within two hours of their scheduled occupy time will lose the use of that range for that day.

24. Units that have requested contractor support (i.e., automated targets, PITS targets, battlefield effects simulators, etc.) that are not present on the specified range within 1 hour of the requested time and have not contacted RMB/TSCQ will forfeit all contracted support for the day.

25. Units that have occupied a range with approved contractor support (i.e., automated targets, PITS targets, battlefield effects simulators, etc.) and that have not begun to use that support within 2 hours of the requested hour of operation will forfeit all contracted support for the day.

26. Units that are training with contractor support (i.e., automated targets, PITS targets, battlefield effects simulators, etc.) that place themselves voluntary into check fire for 2 hours during the approved support operational hours will forfeit all support for the day.

NOTE: Units that encounter situations where contractor support (i.e., automated targets, PITS targets, battlefield effects simulators, etc.) is delayed or interrupted by circumstances beyond the control of the requesting unit (i.e., RMB directed check fire, ASP support, MEDEVAC, etc.) must contact RMB/TSCQ in order to arrange continued support within the scope of the contract and available assets.

## **LASER USE RESTRICTIONS AND SPECIAL INSTRUCTIONS**

### **RANGE 7**

This range is certified for the firing of Class 3B and Class 4 LASERs.

#### **Class 3B LASER:**

- Is not eye safe.
- Hazardous to view under most conditions.
- Can cause damage to the unaided eye.
- Require a "Danger" label



#### Class 4 LASER:

- Most dangerous class.
- Is not eye safe.
- Will cause instantaneous eye damage.
- Some will cause skin damage.
- Some are fire hazards

#### SPECIAL LASER INSTRUCTIONS:

1. All firing of Class 3B and 4 LASERS will be in accordance with MCO 3570.1C, MCBO 3570.1, MCO 5104.1C, current MCB Quantico LASER Safety Survey Report and current MIL-HDBK 828.
2. All LASER OIC's and RSO's will be thoroughly knowledgeable with the LASER systems they employ on this range.
3. All Class 3B and Class 4 LASERS will only be fired at the targets indicated in this LASER SOP.
4. All personnel on the range will wear the appropriate level PPE when firing LASERS (Wavelength and Optical Density).
5. A LASER firing log will be kept for all Class 3B and Class 4 firing.
6. No LASERS will be fired over or within 10 MRAD of the horizon from a stabilized position (15 MRAD for non-stable).





Sheds: 2

Ammo Breakdown: 2

Parking: Yes

Description of Other Structures: Bleachers, head facilities, and 3 fixed mortar positions.

#### RANGE 7 FIRING LINE





RANGE 7 MORTAR PITS



RANGE 7 STEEL INFANTRY TARGETS





RANGE 7 EODT

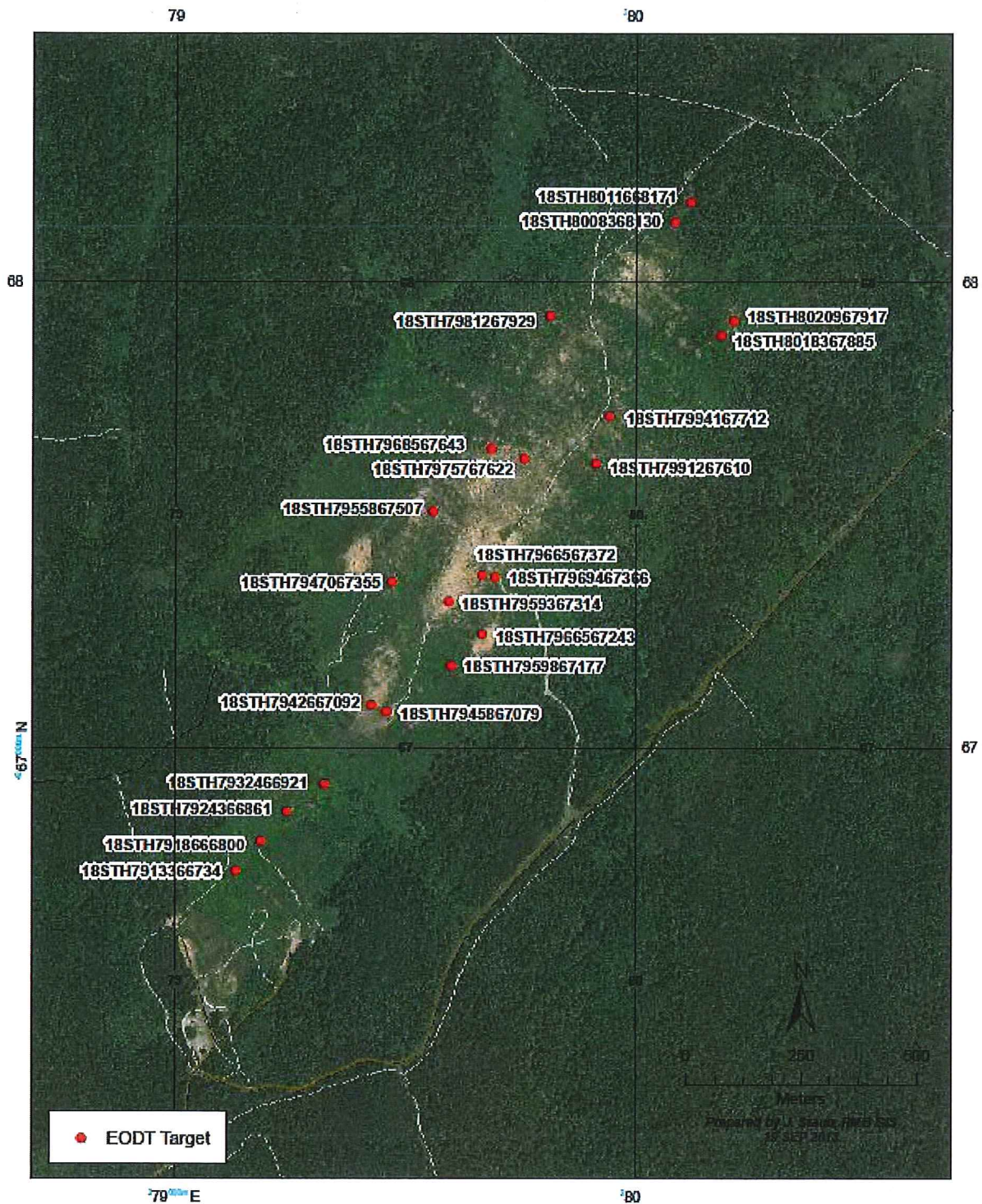


RANGE 7 EODT AND AMIP 8

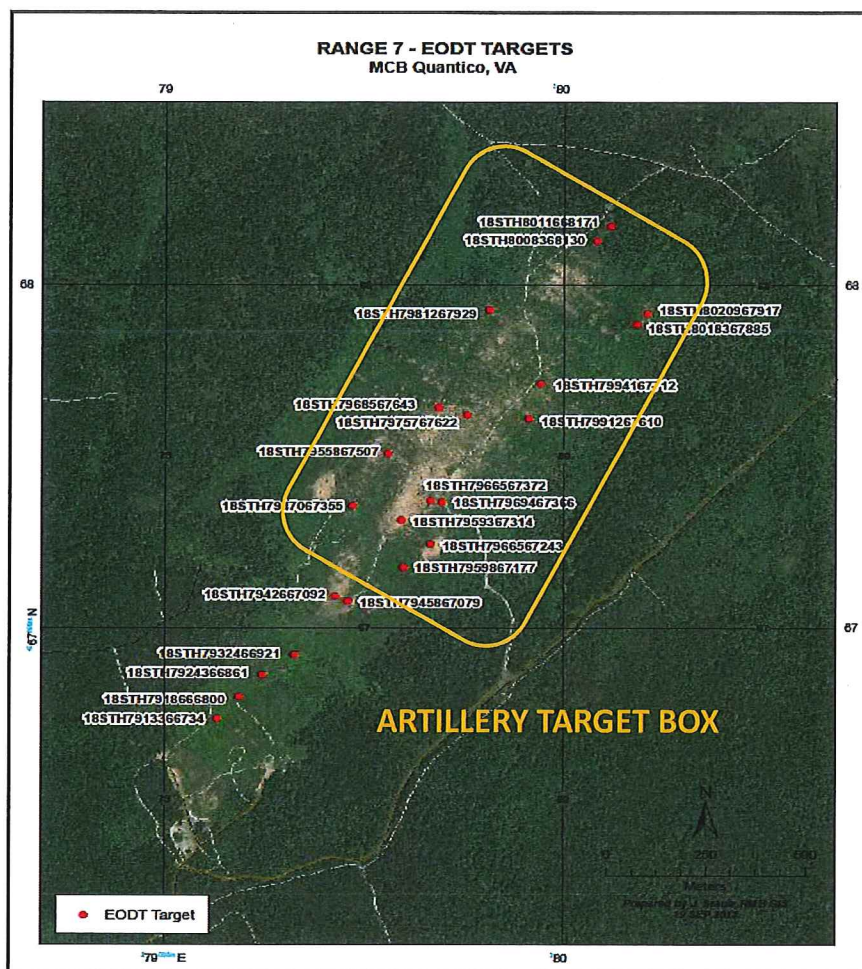




# **RANGE 7 - EODT TARGETS** **MCB Quantico, VA**







#### UTILITIES AVAILABLE

Electricity: Yes  
Lights: None  
Water System: None

INSTALLED COMMUNICATIONS. None

#### Nearest MEDEVAC LZ

Range 7

#### MILES

0.0

#### GRID

79206640 (REDBIRD)

Directions to MEDEVAC LZ: MEDEVAC LZ (REDBIRD) is located behind Range 7 itself. Aircraft cannot land forward of firing line.

#### MEASURED DISTANCES

MT (POL) TBS Distance  
Rations Distance  
To ASP Distance  
EMT/Fire (Fire House 3)

#### MILES

9.5  
9.2  
14.5  
12.6

#### MGRS

87106390  
87406374  
91256605  
89606410

### LASERS AUTHORIZED.

Class 3B and Class 4 Lasers are authorized in accordance with the current MCB Laser Range Safety Survey Reports.

### AREA SUITABILITY

<u>Unit Type</u>	<u>Unit Size</u>	<u>Number of Units</u>
Combat Arms	Company	1

### GEOGRAPHICAL DATA

Access Routes: Route 610 or Dirt 7 via MCB 3  
Soil Type: Dirt  
Terrain Type: Small hills  
Vegetation: Grass/Woodland

### COMMUNICATION REQUIREMENTS:

1. A radio check is required immediately upon occupying any portion of the RTA, every 30 minutes in a live fire status and every 3 hours in a non-live fire status.
2. The Range Control Facility (RCF) Fire Desk Net Control call sign is "Range Control". Your call sign is "Range XX" (name of range, training area or facility unit is occupying).
3. The primary RCF Fire Desk Net Control frequencies are: ELMR talk group "RC Safety" (ground) and 323.7 AM UHF (air).
4. The secondary RCF Fire Desk Net Control is telephone, numbers: 703-784-5321 or 5322.
5. OIC/RSO will monitor the RCF primary and secondary Safety Nets at all times. Instant communication is required.
6. Any unit with organic ELMR radios will have their ELMR radios programed with the "RC Safety" talk group and use those radios as their primary means of communication within the RTA.
7. Units without organic ELMR assets will be issued ELMR radios from RMB upon check-in.
8. Approved Non-ELMR radios are only authorized for internal communication (ground).
9. If the RCF cannot reach a unit within the RTA via primary communication, the unit will be contacted via the secondary means of communication.
10. Upon loss of primary communication the OIC/RSO will initiate a "check fire"/cease training status and will contact the RCF via secondary communication. This communication will be maintained while primary



communication is being restored. Units may only resume firing/training once primary communication has been re-established and clearance is granted by the RCF.

#### INJURY CLASSIFICATIONS:

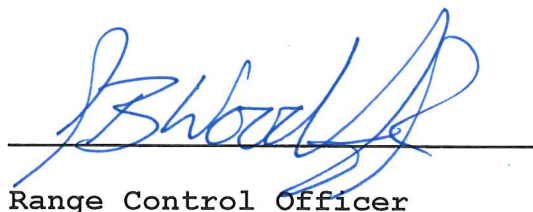
Injuries are classified into the following categories in order to aid in casualty evacuation from the RTA.

1. ROUTINE. Routine injuries are those injuries that are not threatening to life, limb or eyesight; and conditions or illnesses treatable by medication or procedures available at the base medical facilities.
2. PRIORITY. Priority injuries are those injuries that require immediate medical attention but are not threatening to life, limb, or eyesight if treated promptly.
3. URGENT. Urgent injuries are severe injuries that are threatening to life, limb, or eyesight and require immediate medical attention.
4. MASS CASUALTY. A mass casualty is a series of injuries with multiple priority and urgent medical patients.

#### MEDICAL EVACUATION (MEDEVAC) PROCEDURES:

1. Injury occurs.
2. Range immediately cease-fires.
3. Medical support evaluates/treats injured personnel.
4. Range OIC/RSO notifies the RCF of the injury, is the victim conscious/unconscious and what type of MEDEVAC transportation is requested (ground/air).
5. The OIC/RSO must maintain constant radio contact with Range Control and awaits further instructions.

\*Minor injuries and illnesses not requiring medical services need not be reported to the RCF but should be reported in unit training logs.

  
Range Control Officer

Date: 7 JUNE 2016